

## Rotulas SI SI25-PK-DURBAL - SI25-PK-DURBAL

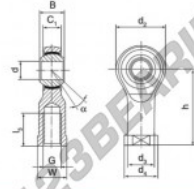
<https://www.123rodamiento.es/rodamiento-cojinete/rotulas/si/si25-pk-durbal>

### SI25-PK



female thread;  
maintenance free,  
according to  
DIN ISO 12240-4,  
series K

Description: DIN ISO rod end K series. Sliding combination steel / bronze-PTFE composite.



rod end body:  
surface case plated

Sliding combination:  
steel / bronze-PTFE composite

inner ring:  
bearing steel hardened and ground

Outer ring:  
rod end body pressed around, outer race  
lined with bronze-PTFE composite

Lubrication:  
maintenance free

order number	d	G	measurement (mm)	B	C1	d1	d2	d3
SI 25 PK	25	M 24 x 2	31	22,00	61	33,5	42	

type	l <sub>1</sub> min	W	h	α [°]	load rating C <sub>0</sub> [kN]	weight [kg]
SI / SIL 25 PK	42	36	94	15	85,00	0,720

## CARACTERÍSTICAS DEL PRODUCTO

Marca	DURBAL
N° Ean13	3663952492315
Diámetro interior	25 mm
Diámetro exterior	61 mm
Espesor	31 mm
Tipo	SI
Peso	720 g
Hilo	Rosca derecha
Lubricación	sin
Envasado	1

[contacto@123rodamiento.es](mailto:contacto@123rodamiento.es)

911 436 830

CRT4 de Lesquin 60 Rue Du Haut De Sainghin 59273 Fretin FRANCE