

## Rotulas SA

### BEM30-60-501-DURBAL - BEM30-60-501-DURBAL

<https://www.123rodamiento.es/rodamiento-cojinete/rotulas/sa/bem30-60-501-durbal>

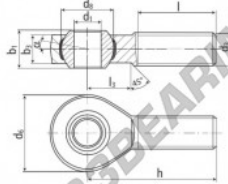
#### BEM30-60-501



male thread;  
maintenance free,  
adapter sizes  
according to  
DIN ISO 12240-4,  
series K



**DURBAL® heavy-duty rod ends  
with integral spherical  
plain bearing in stainless steel**



rod end housing:  
stainless steel 1.4301, rolled thread,  
surface with pickling treatment

joint ball:  
stainless steel, hardened and ground,  
surface superfinished

race:  
nylon / teflon / glass fibre compound

tolerances:  
see page 10

order number		measurements [mm]		weight		basic load rating	
type	right-hand thread / left-hand thread	d <sub>1</sub>	d <sub>2</sub>	d <sub>3</sub>	d <sub>4</sub>	b <sub>1</sub>	b <sub>2</sub>
BEM 30 -60	-501	30	M 30 x 2	70	50,75	37	25,0
measurements [mm]		weight		basic load rating		dyn. stat.	
type	h	l	l <sub>3</sub>	α <sub>1</sub> [°]	α <sub>2</sub> [°]	C	C <sub>0</sub>
BEM 30	110	66	35	17,0	10,5	1,015	33800 97100

## CARACTERÍSTICAS DEL PRODUCTO

Marca	DURBAL
Nº Ean13	3663952509907
Diámetro interior	30 mm
Diámetro interior	1.181" inch
Diámetro exterior	70 mm
Diámetro exterior	2.756" inch
Espesor	37 mm
Espesor	1.457" inch
Tipo	SA
Peso	1015 g
Hilo	Rosca derecha
Lubricación	sin
Envasado	1

[contacto@123rodamiento.es](mailto:contacto@123rodamiento.es)

911 436 830

CRT4 de Lesquin 60 Rue Du Haut De Sainghin 59273 Fretin FRANCE